



# PROFESSIONAL LAUNDRY

# PROFESSIONAL DRYERS ADVANCE SRP-08/10 TP2



## CHARACTERISTICS

### TP2

- User friendly and totally programmable 7"
- USB Connection. Online platform free of charge for programming, telemetry, data analysis...thanks to the IoT
- Videos on display (ads, instructions, etc.)
- 37 languages
- 8 dosing signals as standard

### VERSATILITY

- OPL <> COIN  
Standard models can be programmed as OPL or coin laundry version, central pay, etc.
- SINGLE <> STACKED  
Models can be stacked on top of a washer or on another dryer. Control panels can be assembled between both drums for better ergonomics.
- Ideal for multiple solutions: hotels, hostels, campings, coin laundries, facility services (mops), gyms, etc.
- Wet cleaning features.

### CONNECTIVITY

- IoT - FagorKonnnect standard.
- Management of laundries: OPL and COIN
- Remote payment

### EFFICIENCY

- Optimised airflow
- Wide fluff filter as drawer
- Efficient design

### ROBUSTNESS

- Outer casing in grey skinplate
- Robust aluminium big door
- Industrial fan and powerful airflow
- Sturdy construction of the dryer structure and panels

### OTHERS

- Gas or electric heated models.
- CE approved product

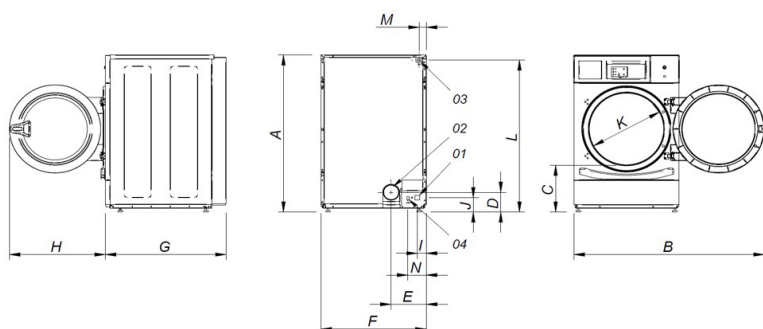
## OPTIONS

- iDRY: humidity sensor
- Stainless steel outer casing
- AISI 304 stainless steel drum
- Reversing door opening
- Tropicalized model: protected board
- Plinth for better ergonomics
- Plinth for better ergonomics in stainless steel
- Control panel mounted below (stacked dryer)
- Order in complete container + compact packing
- Maritime voltage 440V III 50/60 Hz No neutral
- Coin/token kit

# TECHNICAL DATA

## PROFESSIONAL DRYERS | ADVANCE | SRP-08/10 TP2

	U.	SRP-08 TP2		SRP-10 TP2	
<b>CAPACITY &amp; DRUM</b>					
Capacity 1:20	Kg	8		10	
	Lb	17,6		22	
Volume	l	160		200	
	ft	5,65		7,06	
Drum diameter Ø	mm	590		590	
	inch	23,23		23,23	
Drum depth	mm	585		690	
	inch	23,03		27,17	
<b>DOOR</b>					
Height center door	mm	554		554	
	inch	21,81		21,81	
Height base door	mm	320		320	
	inch	12,6		12,6	
Door diameter Ø	mm	480		480	
	inch	18,9		18,9	
<b>GENERAL DETAILS</b>					
Control TP2	-	Yes		Yes	
USB connection	-	Yes		Yes	
Construction	-	Skinplate panels		Skinplate panels	
Plinth	-	Opt		Opt	
Coin laundry version	-	Yes		Yes	
Noise level	dB	62		62	
<b>POWER</b>					
Motor	kW	0,37		0,37	
Electric heating	kW	6,75 / 4,5		6,75 / 4,5	
Gas heating	kW	6,7		6,7	
<b>CONNECTIONS</b>					
Tension 230V I+N+T 50Hz / 60Hz	N° x mm2/A	ELECTRIC	GAS/STEAM	ELECTRIC	GAS/STEAM
Tension 230V III+T 50Hz / / 60Hz	N° x mm2/A	3 x 10 / 40A	3 x 1,5 / 10A	3 x 10 / 40A	3 x 1,5 / 10A
Tension 400V III+N+T 50Hz / / 60Hz	N° x mm2/A	4 x 4 / 25A	3 x 1,5 / 10A	4 x 4 / 25A	3 x 1,5 / 10A
Tension 400V III+N+T 50Hz / / 60Hz	N° x mm2/A	5 x 2,5 / 16A	3 x 1,5 / 10A	5 x 2,5 / 16A	3 x 1,5 / 10A
Fume exhaust Ø	mm	100		100	
Maximum airflow	m³/h	300		300	
<b>CONNECTIONS</b>					
Electric heating consumption	kW	6,75 / 4,5		6,75 / 4,5	
Instantaneous propane gas consumption	Kg/h	0,57		0,57	
Instantaneous natural gas consumption	m³/h	0,71		0,71	
<b>DIMENSIONS / PACKING DIMENSIONS</b>					
Net width / Gross width	mm	680 / 710		680 / 710	
	inch	26,77 / 27,95		26,77 / 27,95	
Net depth / Gross depth	mm	722 / 832		775 / 832	
	inch	28,43 / 32,76		30,51 / 32,76	
Net height / Gross Height	mm	1.056 / 1.141		1.056 / 1.141	
	inch	41,57 / 44,92		41,57 / 44,92	
Net weight / Gross weight	Kg	89 / 100,5		92,6 / 104,1	
	Lb	196,21 / 221,56		204,15 / 229,5	



- 01. Electrical connection
- 02. Exhasust outlet Ø100
- 03. Gas inlet 1/2"
- 04. Ethernet connection

	A	B	C	D	E	F	G	H	I	J	K	L	M	N
SRP-08	1.056	1.227	320	140	226	680	722	615	57	91	480	1.015	50	118
SRP-10	1.056	1.227	320	140	226	680	775	615	57	91	480	1.015	50	118