



WASHING

SANITARY BARRIERS LBS RANGE LBS-27/35/50 TP2

CHARACTERISTICS

TP2

- User friendly and programmable TP2 Control with a 7" touch screen double display.
- PC software free of charge for programming, traceability, data analysis...
- Screen on both sides of the machine as standard
- 37 available languages
- 8 dosing signals as standard

OUTSTANDING FEATURES

- Automatic positioning of drum with motor brake
- 3 water inlets as standard
- Wet cleaning features ready
- G-FACTOR 375
- Traceability as standard
- Heating: electric, steam, and new dual heating model (electric+steam)

EFFICIENCY

- Intelligent consumption
- Optimal loading
- Water Recovery tanks ready: krs
- Low water consumption
- High G-FACTOR: reduced residual moisture > reduced drying time

CONNECTIVITY

- FagorKconnect IoT

ERGONOMICS

- Huge door opening making loading/unloading easier
- Easy friendly drum opening by push button
- Height of loading (door bottom): 800 mm

MAINTENANCE

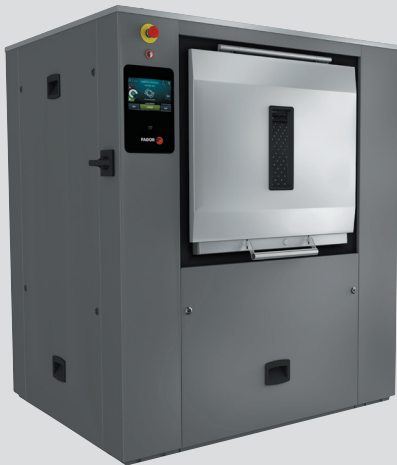
- Electric components on the left side, mechanic components on the right side and connections on the top (protected from water and detergents)
- Central drain as standard
- Technical menu: statistics, alarms, autotest, data recovery for technicians and maintenance

OTHERS

- 2 opposed doors (180°) with sanitary separating frame.
- Ready to be connected to dosing pumps
- Panels in grey skinplate and top panel in stainless steel.
- Drum and vat in stainless steel AISI 304
- Frequency inverter to control imbalance
- CE approved product

OPTIONS

- Auto Weight: automatic weighing sensor system on feet (Includes kit with 6 extra dosing signals)
- Relay card with 6 extra dosing signals: up to 14 signals
- Printer
- Double drain
- FagorKconnect communication
- Titration valve
- Side drain valve
- Low steam pressure
- Detergent box with 4 compartments
- UPS Option (in case of power failure)
- End of cycle light alarm
- Plinth to align loading height (door base at 850mm)
- Stainless steel AISI 304 outer casing
- Stainless steel frame
- Stainless steel frame equipped with loading base
- Maritime wooden packing
- Maritime voltage 440 V III 50/60 Hz (only electric model)
- Voltage 230 V III 50/60 Hz (for LBS-35/50)

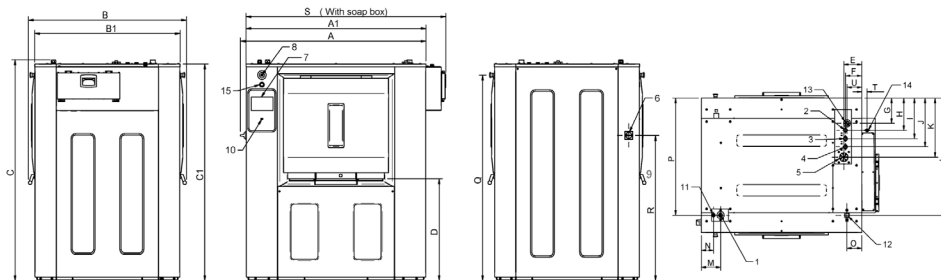


TECHNICAL DATA

SANITARY BARRIERS | LBS RANGE | LBS-27/35/50 TP2

	UNIT.	LBS-27 TP2	LBS-35 TP2	LBS-50 TP2			
DRUM							
Capacity 1:9 / 1:10	Kg	30 / 27	39 / 35	54 / 49			
Volume	l	266	347	489			
Diameter	mm	800	800	800			
Depth	mm	530	690	974			
Number of compartments	Nº.	1	1	1			
GENERAL DETAILS							
Washing speed / Spining speed	r.p.m.	45 / 920	45 / 920	45 / 920			
G Factor	-	375	375	375			
Maximum force transmitted	KN	8,86	9,26	10,63			
Frequency-dynamic force	Hz	15,4	15,4	15,4			
Sound level	dB	< 70	< 70	< 70			
Double drain	-	Opt	Opt	Opt			
Weighing System	-	Opt	Opt	Opt			
DOOR							
Height base door	mm	800	800	800			
Drum opening dimensions	mm	480x515	640x515	640x515			
Vat opening dimensions	mm	542x650	700x650	700x650			
POWER							
Motor	kW	4	4	5,5			
Electric heating power	kW	18	27	36			
Total electric power (elec. mod)	kW	22	31	41,5			
Total electric power (steam mod)	kW	4	4	5,5			
CONNECTIONS		ELETRIC/ DUAL	STEAM	ELETRIC/ DUAL	STEAM	ELETRIC/ DUAL	STEAM
Tension 230V- I + N + T	Nº x mm2/A	-	-	-	-	-	-
Tension 230V- III + T	Nº x mm2/A	4 x 16/63A	4 x 2,5/ 16A	4 x16/ 80A	4 x 2,5/16A	4 x 25/125A	4 x 2,5/16A
Tension 400V- III + N + T	Nº x mm2/A	5 x 10/40A	5x2,5/10A	5 x 10/50A	5 x 2,5/10A	5 x 16 / 63A	5 x 2,5/10A
Steam inlet (Steam model)	inch	3/4"		3/4"		3/4"	
Maximum steam consumption (Steam model)	Kg/h	10,25		16,3		23,3	
Water inlet	inch	3/4"		3/4"		1"	
Water main pressure	Kgs/cm²	3-5		3-5		3-5	
Maximum water consumption*	Lit/h	210*		260*		450*	
Drain	inch	3"		3"		3"	
Drainage capacity	Lit/min	160		160		160	
DIMENSIONS / PACKING DIMENSIONS							
Net width / Gross width	mm	1.201 / 1.464		1.359 / 1.608		1.654 / 1.903	
Net depth / Gross depth	mm	1.098/ 1.300		1.098 / 1.300		1.098 / 1.300	
Net height / Gross height	mm	1.580 / 1.742		1.580 / 1.742		1.580 / 1.742	
Net weight / Gross weight	kg	886 / 906		926 / 946		1.063 / 1.085	
Volume	m³	2,08 / 3,32		2,35 / 3,64		2,87 / 4,31	

* N°20 Program, 75% load



01. ELECTRICAL CONNEXION
02. COLD WATER INLET
03. SOFT WATER INLET
04. HOT WATER INLET
05. LIQUID PRODUCTS INLET
06. MAIN SWITCH
07. CONTROL PANEL
08. EMERGENCY STOP
09. DOOR OPENING
10. USB PORT
11. DOSING PUMPS CONNEXION
12. STEAM INLET
13. EXHAUST
14. COLD WATER DETERGENT BOX
15. MANUAL ROTATION OF DRUM

	A	B	C	A1	B1	C1	D	E	F	G	H	I	J	K	L	M	N	O	P	Q	R	S	T	U
LBS-27 TP2	1244	1193	1612	1201	1098	1581	745	152	138	206	263	330	397	482	956	163	103	126	956	1499	1059	1350	45	125
LBS-35 TP2	1402	1193	1612	1359	1098	1581	745	152	138	206	263	330	397	482	956	163	103	126	956	1499	1059	1508	45	125
LBS-50 TP2	1697	1193	1612	1654	1098	1581	745	152	138	206	263	330	397	482	956	163	103	126	956	1499	1059	1803	45	125



WASHING

—

SANITARY BARRIERS LBS RANGE LBS-70 TP2

CHARACTERISTICS

TP2

- User friendly and programmable TP2 Control with a 7" touch screen double display.
- PC software free of charge for programming, traceability, data analysis...
- Screen on both sides of the machine as standard
- 37 available languages
- 8 dosing signals as standard

OUTSTANDING FEATURES

- Automatic positioning of drum with motor brake
- 3 water inlets as standard
- Wet cleaning features ready
- G-FACTOR 375
- Traceability as standard
- Heating: electric, steam, and new dual heating model (electric+steam)

EFFICIENCY

- Intelligent consumption
- Optimal loading
- Water Recovery tanks ready: KRS
- Low water consumption
- High G-FACTOR: reduced residual moisture > reduced drying time

CONNECTIVITY

- FagorKconnect IoT

ERGONOMICS

- Huge door opening making loading/unloading easier
- Easy friendly drum opening by push button
- Height of loading (door bottom): 800 mm

MAINTENANCE

- Electric components on the left side, mechanic components on the right side and connections on the top (protected from water and detergents)
- Central drain as standard
- Technical menu: statistics, alarms, autotest, data recovery for technicians and maintenance

OTHERS

- 2 opposed doors (180°) with sanitary separating frame.
- Panels in grey skinplate and top panel in stainless steel.
- Drum and vat in stainless steel AISI 304
- Frequency inverter to control imbalance
- CE approved product

OPTIONS

- Auto Weight: automatic weighing sensor system on feet (Includes kit with 6 extra dosing signals)
- Relay card with 6 extra dosing signals: up to 14 signals
- Printer
- Double drain
- FagorKconnect communication
- Titration valve
- Side drain valve
- Low steam pressure
- Detergent box with 4 compartments
- UPS Option (in case of power failure)
- End of cycle light alarm
- Plinth to align loading height (door base at 850mm)
- Stainless steel AISI 304 outer casing
- Stainless steel frame
- Stainless steel frame equipped with loading base
- Maritime wooden packing
- Maritime voltage 440 V III 50/60 Hz (only electric model)
- Voltage 230 V III 50/60 Hz

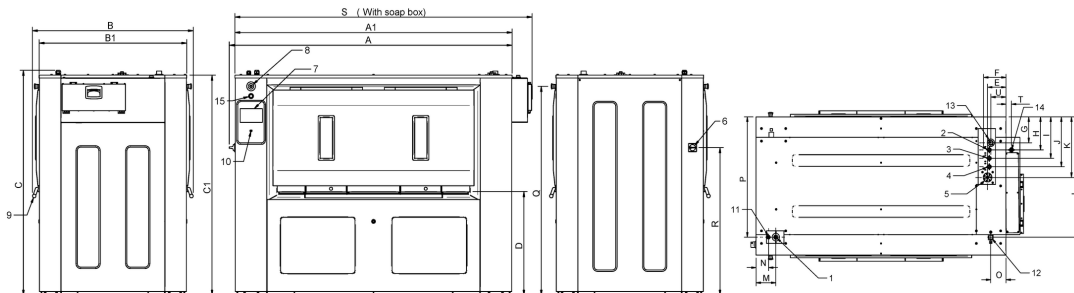


TECHNICAL DATA

SANITARY BARRIERS | LBS RANGE | LBS-70 TP2

UNIT.		LBS-70 TP2	
DRUM			
Capacity 1:9 / 1:10	Kg	78 / 70	
Volume	l	694	
Diameter	mm	800	
Depth	mm	1.380	
Number of compartments	Nº.	2	
GENERAL DETAILS			
Washing speed / Spining speed	r.p.m.	45 / 920	
G Factor	-	375	
Maximum force transmitted	KN	11,90	
Frequency-dynamic force	Hz	15,4	
Sound level	dB	< 70	
Double drain	-	Opt	
Weighing System	-	Opt	
DOOR			
Height base door	mm	800	
Drum opening dimensions	mm	640x515 (x2)	
Vat opening dimensions	mm	1402x650 (x2)	
POWER			
Motor	kW	7,5	
Electric heating power	kW	45	
Total electric power (elec. mod)	kW	52,5	
Total electric power (steam mod)	kW	7,5	
CONNECTIONS		ELETRIC/ E+S	STEAM
Tension 230V- I + N + T	Nº x mm2/A	-	-
Tension 230V- III + T	Nº x mm2/A	4 x 35/160A	4 x 2,5/16A
Tension 400V- III + N + T	Nº x mm2/A	5 x 16/80A	5 x 2,5/10A
Steam inlet (Steam model)	inch	3/4"	
Maximum steam consumption (Steam model)	Kg/h	34,2	
Water inlet	inch	1"	
Water main pressure	Kgs/cm ²	3-5	
Maximum water consumption*	Lit/h	720*	
Drain	mm/inch	80/3"	
Drainage capacity	Lit/min	160	
DIMENSIONS / PACKING DIMENSIONS			
Net width / Gross width	mm	2.061 / 2.310	
Net depth / Gross depth	mm	1.098 / 1.300	
Net height / Gross height	mm	1.580 / 1.742	
Net weight / Gross weight	kg	1.190 / 1.220	
Volume	m ³	3,57 / 5,23	

* N°20 Program, 75% load



01. ELECTRICAL CONNEXION
02. COLD WATER INLET
03. SOFT WATER INLET
04. HOT WATER INLET
05. LIQUID PRODUCTS INLET
06. MAIN SWITCH
07. CONTROL PANEL
08. EMERGENCY STOP
09. DOOR OPENING
10. USB PORT
11. DOSING PUMPS CONNEXION
12. STEAM INLET
13. EXHAUST
14. COLD WATER DETERGENT BOX
15. DRUM MANUAL ROTATION

	A	B	C	A1	B1	C1	D	E	F	G	H	I	J	K	L	M	N	O	P	Q	R	S	T	U
LBS-70	2104	1196	1612	2061	1098	1581	745	152	138	206	263	330	397	482	956	163	103	126	956	1499	1059	2210	45	125