



WASHING

HIGH SPIN WASHERS HIGH CAPACITY LA-100C/120C TP2

CHARACTERISTICS

TP2

- User friendly and totally programmable 7".
- USB Connection. PC software free of charge for programming, traceability, data analysis.
- Videos on display (ads, instructions)
- 37 languages.
- 8 dosing signals as standard.

G FACTOR

- High G-FACTOR 350.

EFFICIENCY

- Intelligent consumption.
- Optimal loading.
- Water Recovery tanks ready: KRS.
- Low water consumption.

VERSATILITY

- Electric < > Hot water.
- Wet cleaning features.

CONNECTIVITY

- IoT - FagorKonnnect standard.
- Remote technical service.
- Management of laundries: OPL.
- Remote payment.

ERGONOMICS

- Biggest door diameters: Ø700.
- Easy opening/closing system for door lock.

MAINTENANCE

- Equivalent parts for all models: contactors, electronic devices, gear.
- Technical menu: traceability, error diagnosis.

OTHERS

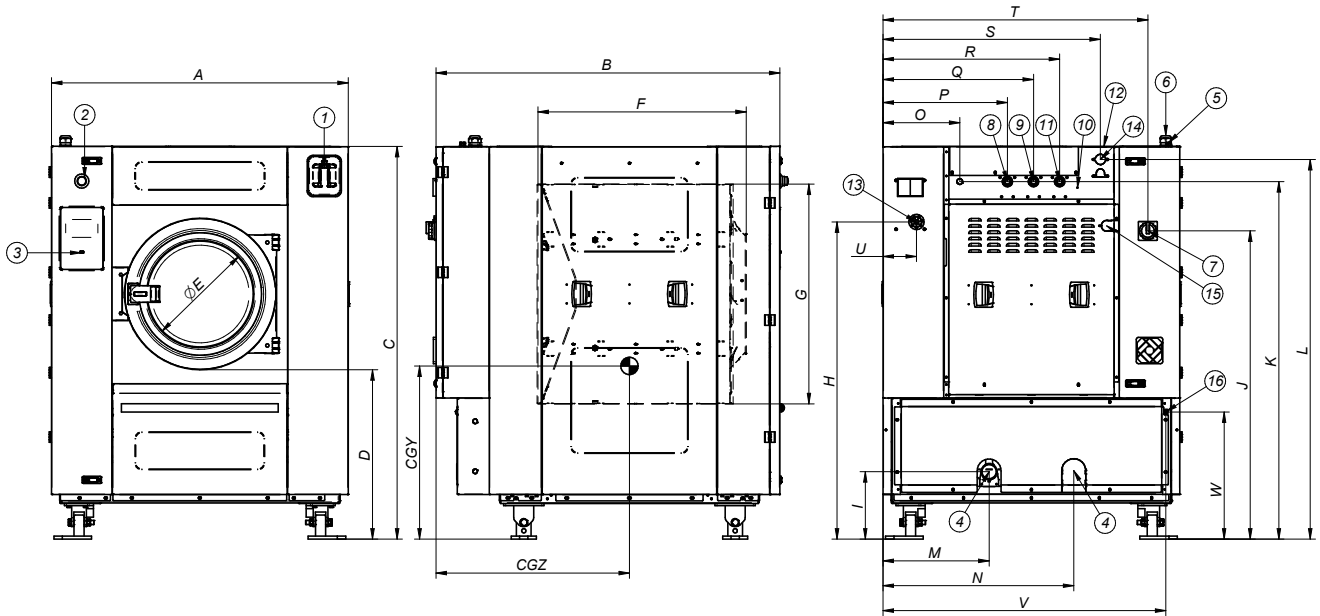
- Drum and tub in stainless steel AISI 304.
- 3 water inlets.
- Air inlet.
- Soft mounted, free standing washers.
- Panels in skinplate.
- Easy to install, no need of fixation to the floor.
- CB and WRAS approved product. Option ETL.
- High spin washers with suspended drum.

OPTIONS

- DQ-2 Dosing pump kit.
- Extra dosing pump DB-1.
- Double drain.
- Tropicalized model: protected board.
- Tilting options: frontal or double tilt.
- Auto Weight: automatic weighing sensor system on feet (Not available with tilting kits).
- Relay card with 6 extra dosing signals: up to 14 signals.
- Stainless steel AISI 304 outer casing.
- Double heating E+S.
- Maritime voltage for electric models: 440V III 50/60 Hz No neutral.



	U.	LA-100C	LA-120C
DRUM			
Load capacity 1:9 / 1:10	Kg	105/95	130/115
Volume	l	950	1.150
Diameter	mm	1.360	1.360
Depth	mm	637	775
GENERAL DETAILS			
Washing speed / Spinning speed	r.p.m.	34 / 678	34 / 678
G Factor	-	350	350
Maximum force transmitted	KN	37,77 ±5,25	37,77 ±5,25
Frequency-dynamic force	Hz	11,33	11,33
Noise level	dB	<70	<70
Coin laundry version	-	No	No
Double drain	-	Opt.	Opt.
Weighing System / Tilting System	-	Opt.	Opt.
SLUICE option	-	No	No
DOOR			
Height center door / Height door	mm	1.330/900	1.330/900
Diameter	mm	700	700
POWER			
Motor	kW	15	15
Electric heating power	kW	-	-
Total electric power (electric model)	kW	-	-
Total electric power (hw, steam mod.)	kW	15	15
CONNECTIONS		STEAM/HOT WATER	STEAM/HOT WATER
Tension 230V - III + T	Nº x mm2 / A	3x16+T / 63A	3x16+T / 63A
Tension 400V - III + N + T	Nº x mm2 / A	4x6+T / 40A	4x6+T / 40A
Steam inlet (Steam model)	inch	1-1/4"	1-1/4"
Maximum steam consumption (Steam model)	Kg/h	26,5	26,5
Water inlet	inch	1-1/2"	1-1/2"
Water main pressure	Kg/cm ²	2-4	2-4
Maximum water consumption	Lit/h	1.058**	1.254**
Air inlet	Kg/cm ²	4	4
Drain	mm/inch	4"	4"
Drainage capacity	Lit/min	500	500
DIMENSIONS / PACKING DIMENSIONS			
Net Width / Gross Width	mm	1.836/1.940	1.836/1.940
Net Depth / Gross Depth	mm	1.710/2.030	1.832/2.030
Net Height / Gross Height	mm	2.245/2.290	2.245/2.290
Net weight / Gross weight	Kg	2.300/2.600	2.762/3.058
Volume	m ³	9	9



** Programme No. 2, 100% load

- 01. Soap dispenser
- 02. Emergency stop
- 03. USB port
- 04. Drain 1
- 05. Drain 2
- 06. Electric connection to liquid soap pump
- 07. Electrical connection
- 08. Main switch
- 09. Auxiliar water inlet

- 10. Hot water inlet
- 11. Equipotential connection
- 12. Cold water inlet
- 13. Steam output
- 14. Liquid soap connection
- 15. Steam connection
- 16. Air intake
- 17. Ethernet port

	A	B	C	D	E	F	G	H	I	J	K	L	M	N	O	P	Q	R	S	T	U	V	W	Y	Z	CGY	CGZ	
LA-100C	mm	1.836	1.710	2.245	945	700	792	1.350	1.740	336	1.781	2.038	2.110	1.095	1.092	494	634	774	954	994	1.239	1.646	165	2.049	2.050	717	853	1.025
LA-120C	mm	1.836	1.832	2.245	945	700	930	1.350	1.740	336	1.781	2.038	2.110	1.095	1.092	494	634	774	954	994	1.239	1.646	165	2.049	2.050	717	853	1.130

	TA	TB	TC	TD	TE	TF	TG	TH	TI	TJ	TK	TL	TM	TN	TO
LA-100C	1.765	1.615	200	1.161	190	110	375	806	210	330	667	2.504	2.636	496	491
LA-120C	1.765	1.615	200	1.644	190	110	375	990	254	330	662	2.465	2.672	419	423



WASHING

NORMAL SPIN WASHERS LOW AND MEDIUM CAPACITY LN-11/14 TP2



CHARACTERISTICS

TP2

- User friendly and totally programmable 7".
- USB Connection. Online platform free of charge for programming, telemetry, data analysis...thanks to the IoT.
- Videos on display (ads, instructions, etc.).
- 37 languages.
- 8 dosing signals as standard 8 dosing.

G FACTOR

- High G-Factor of 200.

EFFICIENCY

- Intelligent consumption.
- Optimal loading.
- Low water consumption.

VERSATILITY

- Make to order: customisation.
- OPL < > COIN.
- Electric < > Hot water.
- Wet cleaning features.

CONNECTIVITY

- IoT - FagorKonnnect.
- Remote technical service.
- Management of laundries: OPL and selfservice.
- Remote payment.

ERGONOMICS

- Biggest door diameters: Ø373.
- Easy opening/closing system for door lock.

MAINTENANCE

- Hinged control panel: easy and ergonomic access.
- Equivalent parts for all models: contactors, electronic devices,...
- Technical menu: telemetry, error diagnosis.

OTHERS

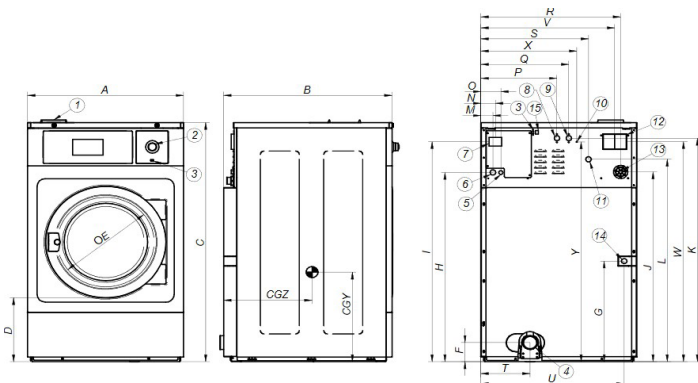
- Hard mounted washers.
- Anchoring to floor with anchoring base.
- Panels in skinplate.
- Drum and tub in stainless steel AISI 304
- 3 water inlets.
- CB and WRAS approved product Option ETL.

OPTIONS

- DQ-2 Dosing pump kit.
- Extra dosing pump DB-1.
- SLUICE: model with 8mm drum holes.
- Anchoring base.
- External double drain 3".
- Normally closed valve.
- Water FULL FLOW: recirculation of bath water.
- Relay card with 6 extra dosing signals: up to 14 signals.
- Silicone gasket.
- Reversible door opening.
- Tropicalized model: protected board.
- Steam kit to transform an E or HW heated machine into steam version.
- Stainless steel AISI 304 outer casing.
- Stainless steel AISI 304 front panel.
- Maritime voltage for electric models: 440V III 50/60 Hz No neutral.
- Coin / token kit.
- Auto unlock kit for the door.

		U.	LN-11 TP2	LN-14 TP2		
DRUM						
Load capacity 1:9 / 1:10		Kg	11/10	14/13		
Volume		l	100	130		
Diameter		mm	620	620		
Depth		mm	330	430		
GENERAL DETAILS						
Washing speed/ Spinning speed		r.p.m.	53/759	53/759		
Factor G		-	200	200		
Maximum force transmitted		KN	2,0 ±3	2,31 ±4		
Frequency-dynamic force		Hz	8,93	8,93		
Noise level		dB	<70	<70		
Coin laundry version		-	Yes	Yes		
Double drain		-	No	Opt.		
Weighing system / Tilting system		-	No	No		
SLUICE option		-	Yes	Yes		
DOOR						
Height center door/ Height door		mm	570/310	570/310		
Diameter		mm	373	373		
POWER						
Motor		kW	1,1	1,1		
Electric heating power		kW	6	9		
Total electric power (electric model)		kW	6,25	9,5		
Total electric power (hw, steammodel)		kW	1,1	1,1		
CONNECTIONS			ELECTRICAL	STEAM/HOT WATER	ELECTRICAL	STEAM/HOT WATER
Tensión 230V- I + N + T	Nº x mm2 / A		2x6+T / 40A	2x1,5+T / 16A	2x10+T / 50A	2x1,5+T / 16A
Tensión 230V- III + T	Nº x mm2 / A		3x2,5+T / 20A	-	3x4+T / 32A	-
Tensión 400V- III + N + T	Nº x mm2 / A		4x1,5+T / 16A	-	4x1,5+T / 16A	-
Steam inlet (Steam model)	inch		1/2"		1/2"	
Maximum steam consumption (Steam model)	Kg/h		7		8,5	
Water inlet	inch		3/4"		3/4"	
Water main pressure	Kg/cm ²		2-4		2-4	
Maximum water consumption	Lit/h		61,5*		78,8*	
Drain	mm/inch		3"		3"	
Drainage capacity	Lit/min		200		200	
DIMENSIONS / PACKING DIMENSIONS						
Net Width / Gross Width		mm	719/782		719/782	
Net Depth / Gross Depth		mm	755/890		856/990	
Net Height / Gross Height		mm	1.165/1.400		1.165/1.400	
Net weight / Gross weight		Kg	198/231,6		210/245	
Volume		m ³	0,97		1,08	

* Programme No. 20, 75% load



- 01. Soap dispenser
- 02. Emergency stop
- 03. USB port
- 04. Drain
- 05. Electric connection to liquid soap pump
- 06. Electrical connection
- 07. Main switch
- 08. Auxiliar water inlet
- 09. Hot water inlet
- 10. Equipotential connection
- 11. Cold water inlet
- 12. Blur output / Water overload
- 13. Liquid soap connection
- 14. Steam connection
- 15. Ethernet port

		A	B	C	D	E	F	G	H	I	J	K	L	M	N	O	P	Q	R	S	T	U	V	W	X	Y	CGY	CGZ
LN-11	mm	719	755	1.165	310	373	148	440	886	1.054	889	1.073	958	61	74	101	316	376	637	475	211	654	607	1.053	416	1.053	383	511
LN-14	mm	719	856	1.165	310	373	148	440	886	1.054	889	1.073	958	61	74	101	316	376	637	475	211	654	607	1.053	416	1.053	484	524



WASHING

NORMAL SPIN WASHERS LOW AND MEDIUM CAPACITY LN-18/22 TP2



CHARACTERISTICS

TP2

- User friendly and totally programmable 7"
- USB Connection. Online platform free of charge for programming, telemetry, data analysis...thanks to the IoT.
- Videos on display (ads, instructions, etc.)
- 37 languages.
- 8 dosing signals as standard.

G FACTOR

- G-FACTOR 200.

EFFICIENCY

- Intelligent consumption.
- Optimal loading.
- Low water consumption.

VERSATILITY

- Make to order: customisation.
- OPL < > COIN.
- Electric < > Hot water.
- Wet cleaning features.

CONNECTIVITY

- IoT - FagorKonnnect.
- Remote technical service.
- Management of laundries: OPL and COIN.
- Remote payment.

ERGONOMICS

- Biggest door diameters: Ø460.
- Easy opening/closing system for door lock.

MAINTENANCE

- Hinged panel: easy access to parts.
- Equivalent parts for all models: contactors, electronic devices, gear.
- Technical menu: traceability, error diagnosis.

OTHERS

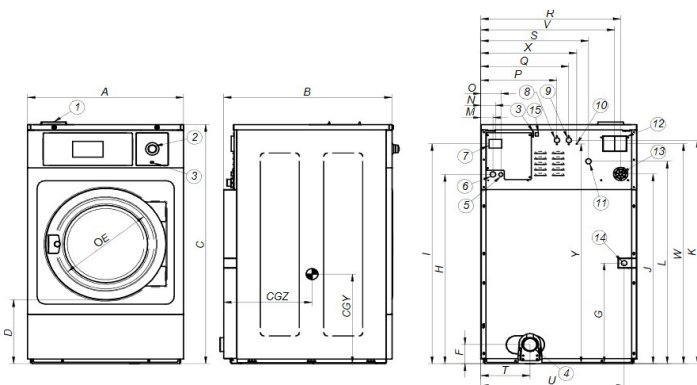
- Hard mounted washers.
- Anchoring to floor with anchoring base.
- Panels in skinplate.
- Drum and tub in stainless steel AISI 304
- 3 water inlets.
- CB and WRAS approved product Option ETL.

OPTIONS

- DQ-2 Dosing pump kit.
- Extra dosing pump DB-1.
- SLUICE: model with 8mm drum holes.
- Anchoring base.
- Double drain.
- Normally closed valve.
- Water RE-CYCLE: recirculation of bath water.
- Relay card with 6 extra dosing signals: up to 14 signals.
- Silicone gasket.
- Reversible door opening.
- Tropicalized model: protected board.
- Steam kit to transform an E or HW heated machine into steam version.
- Stainless steel AISI 304 outer casing.
- Stainless steel AISI 304 front panel.
- Maritime voltage for electric models: 440V III 50/60 Hz No neutral.
- Coin / token kit.
- Auto unlock kit for the door.

	U.	LN-18 TP2	LN-22 TP2		
DRUM					
Load capacity 1:9 / 1:10	Kg	20/18	25/22		
Volume	l	180	220		
Diameter	mm	700	700		
Depth	mm	470	560		
GENERAL DETAILS					
Washing speed / Spining speed	r.p.m.	50/714	50/714		
G Factor	-	200	200		
Maximum force transmitted	KN	2,63 ±5	3,04 ±5		
Frequency-dynamic force	Hz	8,42	8,42		
Noise level	dB	<70	<70		
Coin laundry version	-	Yes	Yes		
Double drain	-	Opt.	Opt.		
Weighing System / Tilting System	-	No	No		
Option SLUICE	-	Yes	Yes		
DOOR					
Height center door / Height door	mm	655/348	655/348		
Diameter	mm	460	460		
POWER					
Motor	kW	2,2	2,2		
Electric heating power	kW	12	12		
Total electric power (electric model)	kW	12,75	12,75		
Total electric power (hw, steam model)	kW	2,2	2,2		
CONNECTIONS		ELECTRIC	STEAM/HOT WATER	ELECTRIC	STEAM/HOT WATER
Tension 230V - I + N + T	N° x mm2 / A	2x16+T / 63A	2x1,5+T / 16A	2x16+T / 63A	2x1,5+T / 16A
Tension 230V - III + T	N° x mm2 / A	3x6+T / 40A	-	3x6+T / 40A	-
Tension 400V - III + N + T	N° x mm2 / A	4x4+T / 32A	-	4x4+T / 32A	-
Steam inlet (Steam model)	inch	1/2"		1/2"	
Maximum steam consumption (Steam model)	Kg/h	12		12	
Water inlet	inch	3/4"		3/4"	
Water main pressure	Kg/cm ²	2-4		2-4	
Maximum water consumption	Lit/h	120*		120*	
Drain	mm/inch	3"		3"	
Drainage capacity	Lit/min	200		200	
DIMENSIONS / PACKING DIMENSIONS					
Net Width / Gross Width	mm	788/850		788/850	
Net Depth / Gross Depth	mm	935/1.013		1.035/1.106	
Net Height / Gross Height	mm	1.307/1.583		1.307/1.583	
Net weight / Gross weight	Kg	272/309		295/335	
Volume	m ³	1,36		1,5	

* Programme No. 20, 75% load



- 01. Soap dispenser
- 02. Emergency stop
- 03. USB port
- 04. Drain
- 05. Electric connection to liquid soap pump
- 06. Electrical connection
- 07. Main switch
- 08. Auxiliar water inlet
- 09. Hot water inlet
- 10. Equipotential connection
- 11. Cold water inlet
- 12. Blur output / Water overload
- 13. Liquid soap connection
- 14. Steam connection
- 15. Ethernet port

	A	B	C	D	E	F	G	H	I	J	K	L	M	N	O	P	Q	R	S	T	U	V	W	X	Y	CGY	CGZ	
LN-18	mm	788	935	1.307	348	460	143	552	1.035	1.203	1.038	1.222	1.107	61	74	101	385	445	706	544	245	724	676	1.202	485	1.202	479	546
LN-22	mm	788	1.035	1.307	348	460	143	552	1.035	1.203	1.038	1.222	1.107	61	74	101	385	445	706	544	249	724	676	1.202	485	1.202	479	586



WASHING

NORMAL SPIN WASHERS LOW AND MEDIUM CAPACITY LN-28 TP2



CHARACTERISTICS

TP2

- User friendly and totally programmable 7"
- USB Connection. Online platform free of charge for programming, telemetry, data analysis...thanks to the IoT.
- Videos on display (ads, instructions, etc.)
- 37 languages. 8 dosing signals as standard.
- 8 dosing signals as standard.

G FACTOR

- G-FACTOR 200.

EFFICIENCY

- Intelligent consumption.
- Optimal loading.
- Low water consumption.

VERSATILITY

- Make to order: customisation .
- OPL < > COIN.
- Electric < > Hot water.
- Wet cleaning features.

CONNECTIVITY

- IoT - FagorKconnect.
- Remote technical service.
- Management of laundries: OPL and COIN.
- Remote payment.

ERGONOMICS

- Biggest door diameters: Ø460.
- Easy opening/closing system for door lock.

MAINTENANCE

- Hinged control panel: easy and ergonomic access.
- Equivalent parts for all models: contactors, electronic devices,...
- Technical menu: telemetry, error diagnosis.

OTHERS

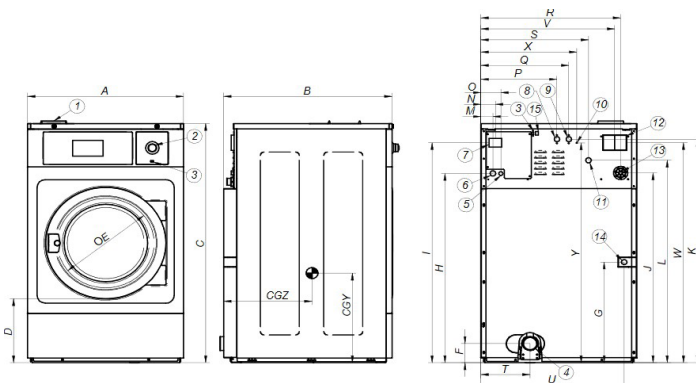
- Hard mounted washers.
- Anchoring to floor with anchoring base.
- Panels in skinplate.
- Drum and tub in stainless steel AISI 304
- 3 water inlets.
- CB and WRAS approved product Option ETL.

OPTIONS

- DQ-2 Dosing pump kit.
- Extra dosing pump DB-1.
- SLUICE: model with 8mm drum holes.
- Anchoring base.
- Double drain.
- Normally closed valve.
- Water RE-CYCLE: recirculation of bath water.
- Relay card with 6 extra dosing signals: up to 14 signals.
- Silicone gasket.
- Reversible door opening.
- Tropicalized model: protected board.
- Steam kit to transform an E or HW heated machine into steam version.
- Stainless steel AISI 304 outer casing.
- Stainless steel AISI 304 front panel.
- Maritime voltage for electric models: 440V III 50/60 Hz No neutral.
- Coin / token kit.
- Auto unlock kit for the door.

		U.	LN-28 TP2
DRUM			
Load capacity 1:9 / 1:10		Kg	31/28
Volume		l	280
Diameter		mm	770
Depth		mm	585
GENERAL DETAILS			
Washing speed / Spining speed		r.p.m.	48/682
G Factor		-	200
Maximum force transmitted		KN	3,68 ± 6
Frequency-dynamic force		Hz	8,02
Noise level		dB	<70
Coin laundry version		-	Yes
Double drain		-	Opt.
Weighing System / Tilting System		-	No
SLUIICE option		-	Yes
DOOR			
Height center door / Height door		mm	700/400
Diameter		mm	460
POWER			
Motor		kW	4
Electric heating power		kW	18
Total electric power (electric model)		kW	19,2
Total electric power (hw, steam model)		kW	4
CONNECTIONS			ELECTRIC STEAM / HOT WATER.
Tension 230V - I + N + T	N° x mm2 / A	-	2x4+T / 32A
Tension 230V - III + T	N° x mm2 / A	3x16+T / 63A	3x2,5+T / 20A
Tension 400V - III + N + T	N° x mm2 / A	4x4+T / 32A	4x1,5+T / 16A
Steam inlet (Steam model)	inch	3/4"	
Maximum steam consumption (Steam model)	Kg/h	15	
Water inlet	inch	3/4"	
Water main pressure	Kg/cm ²	2-4	
Maximum water consumption	Lit/h	164,8*	
Drain	mm/inch	3"	
Drainage capacity	Lit/min	200	
DIMENSIONS / PACKING DIMENSIONS			
Net Width / Gross Width	mm	884/945	
Net Depth / Gross Depth	mm	1.075/1.230	
Net Height / Gross Height	mm	1.340/1.583	
Net weight / Gross weight	Kg	403/431	
Volume	m ³	1,84	

* Programme No. 20, 75% load



- 01. Soap dispenser
- 02. Emergency stop
- 03. USB port
- 04. Drain
- 05. Electric connection to liquid soap pump
- 06. Electrical connection
- 07. Main switch
- 08. Auxiliar water inlet
- 09. Hot water inlet
- 10. Equipotential connection
- 11. Cold water inlet
- 12. Blur output / Water overload
- 13. Liquid soap connection
- 14. Steam connection
- 15. Ethernet port

	A	B	C	D	E	F	G	H	I	J	K	L	M	N	O	P	Q	R	S	T	U	V	W	X	Y	CGY	CGZ	
LN-28	mm	884	1.075	1.340	400	460	149	548	1.063	1.230	1.065	1.250	1.135	61	74	101	430	510	801	640	268	820	772	1.220	570	1.210	591	593



WASHING

NORMAL SPIN WASHERS LOW AND MEDIUM CAPACITY LN-35C/45C TP2

CHARACTERISTICS

TP2

- User friendly and totally programmable 7" TP2 touch screen
- USB Connection. PC software free of charge for programming, traceability, data analysis...
- Videos on display (ads, instructions)
- 37 languages
- 8 dosing signals as standard

G FACTOR

- G-FACTOR 200.

EFFICIENCY

- Intelligent consumption.
- Optimal loading.
- Water Recovery tanks ready: KRS.
- Low water consumption.

VERSATILITY

- Make to order: customisation .
- OPL < > COIN.
- Electric < > Hot water.
- Wet cleaning features.

CONNECTIVITY

- Remote technical service.
- Management of laundries: OPL and selfservice.
- Remote payment.

ERGONOMICS

- Biggest door diameters: Ø560 (for LN-35C/45C).
- Easy opening/closing system for door lock.

MAINTENANCE

- Hinged panel: easy access to parts.
- Equivalent parts for all models: contactors, electronic devices, gear.
- Technical menu: traceability, error diagnosis.

OTHERS

- Hard mounted washers.
- Anchoring to floor with anchoring base.
- Panels in skinplate.
- Drum and tub in stainless steel AISI 304
- 3 water inlets.
- CB and WRAS approved product Option ETL.

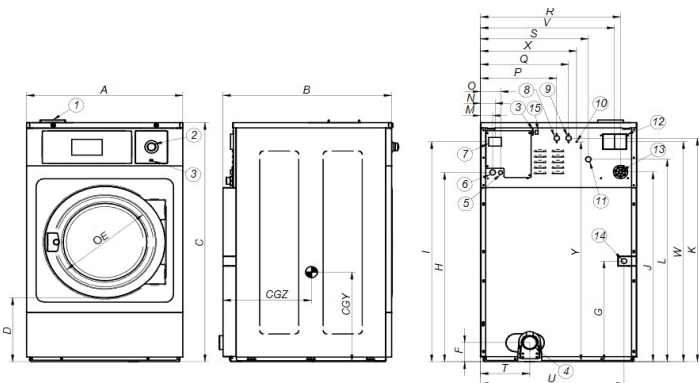
OPTIONS

- Double drain.
- Normally closed valve.
- Silicon gasket (for LN-35).
- WaterFULL FLOW recirculation of bath water.
- Relay card with 6 extra dosing signals: up to 14 signals.
- Printer.
- Reversible door opening.
- Tropicalized model: protected board.
- Steam kit to transform an E or HW heated machine into steam version.
- Stainless steel outer casing.
- Stainless steel front panel.
- SLUICE: model with 8mm drum holes (for LN-35C/45C).
- Anchoring base.
- Maritime voltage for electric models: 440V III 50/60 Hz No neutral.
- Coin / token kit.
- Delayed door opening in case of power outage.



		U.	LN-35C TP2	LN-45C TP2		
DRUM						
Load capacity 1:9 / 1:10		Kg	39/35	47/42		
Volume		l	350	450		
Diameter		mm	860	860		
Depth		mm	602	720		
GENERAL DETAILS						
Washing speed / Spining speed		r.p.m.	45/644	45/644		
G Factor		-	200	200		
Maximum force transmitted		KN	4,59 ±8	5,9 ±8		
Frequency-dynamic force		Hz	7,58	7,58		
Noise level		dB	<70	<70		
Coin laundry version		-	Yes	Yes		
Double drain		-	Opt.	Opt.		
Weighing system / Tilting system		-	No	No		
SLUICE Version		-	Yes	Yes		
DOOR						
Height center door / Height door		mm	735/440	735/440		
Diameter		mm	560	560		
POWER						
Motor		kW	4	6		
Electric heating power		kW	21	21		
Total electric power (electric model)		kW	22	22		
Total electric power (hw, steam model)		kW	4	6		
CONNECTIONS			ELECTRIC	STEAM/HOT WATER	ELECTRIC	STEAM/HOT WATER
Tension 230V- I + N + T	N° x mm2 / A	-	-	2x4+T / 32A	-	-
Tension 230V- III + T	N° x mm2 / A	3x16+T/63A	3x2,5+T / 20A	3x16+T / 63A	3x4+T / 32A	
Tension 400V- III + N + T	N° x mm2 / A	4 x6+T / 40A	2x1,5+T / 16A	4x6+T / 40A	4x1,5+T / 16A	
Steam inlet (Steam model)	inch		3/4"		3/4"	
Maximum steam consumption (Steam model)	Kg/h		18		21	
Water inlet	inch		3/4"		3/4"	
Water main pressure	Kg/cm ²		2-4		2-4	
Maximum water consump.	Lit/h		199,6*		256,6*	
Drain	mm/inch		3"		3"	
Drainage capacity	Lit/min		200		200	
DIMENSIONS / PACKING DIMENSIONS						
Net Width / Gross Width	mm		979/1.045		979/1.125	
Net Depth / Gross Depth	mm		1.155/1.280		1.325/1.440	
Net Height / Gross Height	mm		1.411/1.655		1.411/1.640	
Net weight / Gross weight	Kg		476/510		600/670	
Volume	m ³		2,2		2,6	

* Programme No. 20, 75% load



- 01. Soap dispenser
- 02. Emergency stop
- 03. USB port
- 04. Drain
- 05. Electric connection to liquid soap pump
- 06. Electrical connection
- 07. Main switch
- 08. Auxiliar water inlet
- 09. Hot water inlet
- 10. Equipotential connection
- 11. Cold water inlet
- 12. Blur output / Water overload
- 13. Liquid soap connection
- 14. Steam connection
- 15. Ethernet port

	A	B	C	D	E	F	G	H	I	J	K	L	M	N	O	P	Q	R	S	T	U	V	W	X	Y	CGY	CGZ	
LN-35C	mm	979	1.155	1.411	370	560	149	623	1.139	1.307	1.116	1.322	1.211	61	74	101	545	625	885	715	262	917	855	1.281	760	1.373	635	682
LN-45C	mm	979	1.325	1.411	370	560	154	623	1.139	1.307	1.116	1.322	1.211	61	74	101	545	625	885	715	262	917	855	1.281	760	1.373	635	760



WASHING

NORMAL SPIN WASHER EXTRACTORS HIGH CAPACITY LN-60C/80C TP2

CHARACTERISTICS

TP2

- User friendly and totally programmable 7"
- USB Connection. Online platform free of charge for programming, telemetry, data analysis...thanks to the IoT.
- Videos on display (ads, instructions, etc.)
- 37 languages. 8 dosing signals as standard.
- 8 dosing signals as standard.

G FACTOR

- High G-Factor 150.

EFFICIENCY

- Intelligent consumption.
- Optimal loading.
- Low water consumption.

VERSATILITY

- Make to order: customisation.
- OPL < > COIN.
- Electric < > Hot water.
- WET CLEANING features as standard.

CONNECTIVITY

- IoT - FagorKconnect.
- Remote technical service.
- Management of laundries: OPL.
- Remote payment.

ERGONOMICS

- Big door diameters: Ø 560 mm.
- Easy opening/closing system for door lock.

MAINTENANCE

- Hinged control panel: easy and ergonomic access.
- Equivalent parts for all models: contactors, electronic devices,...
- Technical menu: telemetry, error diagnosis.diagnosis.

OTHERS

- Hard mounted washers.
- Anchoring to floor with anchoring base.
- Panels in skinplate.
- Drum and tub in stainless steel AISI 304.
- 3 water inlets (Water inlet hoses not included).
- CB and WRAS approved product Option ETL.

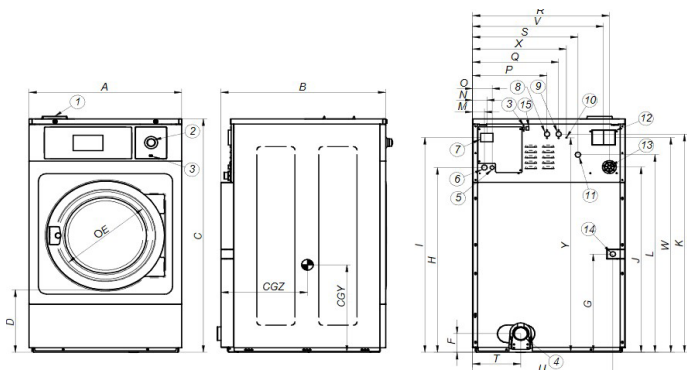
OPTIONS

- DQ-2 Dosing pump kit.
- Extra dosing pump DB-1.
- SLUICE: model with 8mm drum holes.
- Anchoring base.
- Double drain.
- Normally closed valve.
- Water inlet hose.
- Relay card with 6 extra dosing signals: up to 14 signals.
- Reversible door opening.
- Tropicalized model: protected board.
- Steam kit to transform an E or HW heated machine into steam version.
- Stainless steel AISI 304 outer casing.
- Stainless steel AISI 304 front panel.
- Maritime voltage for electric models: 440V III 50/60 Hz No neutral.
- Coin / token kit.
- Auto unlock kit for the door.
- Stainless steel AISI 304 outer casing.
- Front soap dispenser.



	U.	LN-60C TP2	LN-80C TP2		
DRUM					
Load capacity 1:9 / 1:10	Kg	65/59	85/77		
Volume	l	590	770		
Diameter	mm	1.048	1.048		
Depth	mm	684	936		
GENERAL DETAILS					
Washing speed / Spining speed	r.p.m.	42,5 / 505	42,5 / 505		
G Factor	-	150	150		
Maximum force transmitted	KN	9,12 ± 15	10,17 ± 15		
Frequency-dynamic force	Hz	6,93	6,93		
Noise level	dB	< 70	< 70		
Coin laundry version	-	Yes	Yes		
Double drain	-	Opt.	Opt.		
Weighing system / Tilting system	-	No	No		
SLUICE option		Yes	Yes		
DOOR					
Height center door / Height door	mm	900 / 540	900 / 540		
Diameter	mm	560	560		
MOTOR					
Motor	kW	5,5	7,5		
Electric heating power	kW	36	48/36***		
Total electric power (electric model)	kW	38	50,5/38,5***		
Total electric power (hot water, steam)	kW	5,5	7,5		
CONNECTIONS					
		ELECTRIC	STEAM/HOT WATER	ELECTRIC	STEAM/HOT WATER
Tension 230V - III + T	N° x mm2 / A	3x25+T / 100A	3x4+T / 32A	3x25+T / 100A	3x4+T / 32A
Tension 400V - III + N + T	N° x mm2 / A	4x16+T / 63A	4x1,5+T / 16A	4x25+T / 80A	4x4+T / 20A
Steam inlet (Steam model)	inch	3/4"		3/4"	
Max. steam consumption (Steam model)	Kg/h	21		21	
Water inlet	inch	1"		1"	
Water main pressure	Kg/cm ²	2-4		2-4	
Maximum water consumption	Lit/h	627,9**		814,5**	
Drain	mm/inch	3"		3"	
Drainage capacity	Lit/min	200		200	
DIMENSIONS / PACKING DIMENSIONS					
Net Width / Gross Width	mm	1.225 / 1.335		1.225 / 1.335	
Net Depth / Gross Depth	mm	1.315 / 1.440		1.492 / 1.660	
Net Height / Gross Height	mm	1.640 / 1.860		1.640 / 1.860	
Net weight / Gross weight	Kg	792 / 878		871 / 963	
Volume	m ³	3,6		4,12	

** Programme No. 2, 100% load
 ***400V=48kW / 230V=36kW version



- 01. Soap dispenser
- 02. Emergency stop
- 03. USB port
- 04. Drain
- 05. Electric connection to liquid soap pump
- 06. Electrical connection
- 07. Main switch
- 08. Auxiliar water inlet
- 09. Hot water inlet
- 10. Equipotential connection
- 11. Cold water inlet
- 12. Blur output / Water overload
- 13. Liquid soap connection
- 14. Steam connection
- 15. Ethernet port

	A	B	C	D	E	F	G	H	I	J	K	L	M	N	O	P	Q	R	S	T	U	V	W	X	Y	CGY	CGZ
LN-60C	1.225	1.315	1.640	540	560	115	984	1.368	1.536	1.306	1.551	1.318	61	74	101	651	731	1.110	869	318	1.163	1.080	1.470	992	1.595	644	972
LN-80C	1.225	1.492	1.640	540	560	115	984	1.368	1.536	1.306	1.551	1.318	61	74	101	651	731	1.110	869	318	1.163	1.080	1.470	992	1.595	644	750