



DRYING

STACK DRYERS ADVANCE SR-2-11/14/18 TP2 XP

CHARACTERISTICS

TP2

- 7" colour touch screen, programmable and easy to use.
- USB connection.
- FAGORKONNECT - Includes online platform for programming, telemetry, data analysis... via IoT.
- On-screen videos: announcements, instructions (useful for self-service).
- 37 languages

OUTSTANDING FEATURES

- FREQUENCY INVERTER - Standard inversion of rotation.
- STAINLESS DRUM - Stainless steel drum standard.
- Frequency inverter standard.

EFFICIENCY

- MIXED FLOW - Axial-radial airflow system.
- EFFICIENT AIRFLOW - Large debris filter.

VERSATILITY

- Tailor-made - Customisation.
- WET CLEANING.
- OPL > Self-Service - The standard OPL dryer convertible to self-service version.

CONNECTIVITY

- IIoT FagorKonnnect standard.
- Laundry management: OPL and self-service.
- Remote payment (self-service).

ERGONOMICS

- **Stainless steel filter drawer.**
- **Large door diameters.**
- **180° opening hinges.**

MAINTENANCE

- Hinged panel: easy and ergonomic access.

- Technical menu: statistics, for technicians and maintenance.

OTHERS

- Grey skinplate cabinet, stainless steel effect.
- SOFT TOUCH - Drum with recessed perforations.
- COOL DOWN - Cooling at the end of the cycle.
- Available in electric or gas heating.
- CE approved.

OPTIONS

- iDRY - Intelligent humidity control. With temperature control at drum air inlet.
- Double glazed door.
- FIRE KARE - Integrated fire protection system.
- Tropicalised model.
- Opposing door opening.
- Dosing/spraying.
- Stainless steel cabinet.
- Stainless steel front panel
- Wooden packaging.
- Rear panel external air inlet + filter.
- Filter borras with 0,3 mm mesh (standard 0,6mm).
- Maritime voltage for electric models: 440V III 50/60 Hz No N.
- Other voltages available.



	U.	SR-2-11 TP2 XP	SR-2-14 TP2 XP	SR-2-18 TP2 XP			
CAPACITY							
Capacity 1/18	Kg	11,7 x 2	15 x 2	18,3 x 2			
	Lb	25,8 x 2	33,1 x 2	40,4 x 2			
Capacity 1/20	Kg	10,5 x 2	13,5 x 2	16,5 x 2			
	Lb	23,1 x 2	29,8 x 2	36,4 x 2			
DRUM							
Ø Drum	mm	750	750	750			
	inch	29,5	29,5	29,5			
Drum length	mm	475	610	746			
	inch	18,7	24	29,4			
Drum volume	l	210	270	330			
	cu ft	7,41	9,53	11,64			
Ø Door	mm	574	574	574			
	inch	22,6	22,6	22,6			
Floor to door center	mm	547 / 1522	547 / 1522	547 / 1522			
	inch	21,54 / 59,92	21,54 / 59,92	21,54 / 59,92			
Floor to lower part of the door	mm	189 / 1164	189 / 1164	189 / 1164			
	inch	7,32 / 45,83	7,32 / 45,83	7,32/45,83			
ELECTRIC POWER							
Installed heating power	kW	12 x 2	18 x 2	18 x 2			
Installed electrical power	kW	25,34	37,34	37,34			
Evaporation capacity	l/h*	27 (13,5 x 2)	29 (14,5 x 2)	31 (15,5 x 2)			
	USgallon/h*	7,13 (3,56 x 2)	7,66 (3,83 x 2)	7,93 (3,96 x 2)			
Hourly output	Kg/h**	54 (27 x 2)	58 (29 x 2)	62 (31 x 2)			
	Lb/h**	119 (59,5 x 2)	127,9 (64 x 2)	132,2 (66,1 x 2)			
Drum motor power	kW	0,37 x 2	0,37 x 2	0,37 x 2			
GAS POWER							
Installed heating power gas	kcal/h***	17627 x 2	17627 x 2	17627 x 2			
	Btu/h***	69996 x 2	69996 x 2	69996 x 2			
	kW***	20,5 x 2	20,5 x 2	20,5 x 2			
Installed electrical power	KW	1,34	1,34	1,34			
Instant propane gas consumption (G31)	Kg/h	1,76 x 2	1,76 x 2	1,76 x 2			
	Lb/h	3,88 x 2	3,88 x 2	3,88 x 2			
Instant natural gas consumption (G20)	m³/h	2,17 x 2	2,17 x 2	2,17 x 2			
	cfm	1,28 x 2	1,28 x 2	1,28 x 2			
Evaporation capacity	l/h	30,8 (15,4 x 2)	31,4 (15,7 x 2)	32 (16 x 2)			
	USgallon/h	8,1 (4,05 x 2)	8,28 (4,14 x 2)	8,44 (4,22 x 2)			
Hourly output	Kg/h	61,6 (30,8 x 2)	62,8 (31,4 x 2)	64 (32 x 2)			
	Lb/h	135,4 (67,7 x 2)	138,4 (69,2 x 2)	141,8 (70,9 x 2)			
Ø Gas inlet	BSPP ISO 228-1	3/4"	3/4"	3/4"			
VENTILATION							
Nominal air flow	m³/h	500 x 2	500 x 2	500 x 2			
	cfm	294,28 x 2	294,28 x 2	294,28 x 2			
Air outlet Ø	mm	200 x 2	200 x 2	200 x 2			
	inch	7,87	7,87	7,87			
Fan motor power	kW	0,25 x 2	0,25 x 2	0,25 x 2			
HEAT DISSIPATION							
Total max heat dissipation	kW	3,3	3,3	3,3			
	Btu/h	11198	11198	11198			
Front pannel max heat dissipation	kW	1,2	1,2	1,2			
	Btu/h	4199	4199	4199			
CONNECTIONS		ELECTRICAL	GAS	ELECTRICAL	GAS	ELECTRICAL	GAS
Tension 230V - I + N + G	Nº x mm2 / A	-	3 x 2,5 / 16	-	3 x 2,5 / 16	-	3 x 2,5 / 16
Tension 230V - III + G	Nº x mm2 / A	4 x 25 / 80	3 x 2,5 / 16 (5*)	4 x 50 / 125	3 x 2,5 / 16 (5*)	4 x 50 / 125	3 x 2,5 / 16 (5*)
Tension 400V - III + N + G	Nº x mm2 / A	5 x 16 / 50	3 x 2,5 / 16 (6*)	5 x 16 / 63	3 x 2,5 / 16 (6*)	5 x 16 / 63	3 x 2,5 / 16 (6*)

DIMENSIONS / PACKING DIMENSIONS				
Net width / Gross width	mm	785 / 865	785 / 865	785 / 865
	inch	30,9 / 34,1	30,9 / 34,1	30,9 / 34,1
Net depth / Gross depth	mm	1001 / 1084	1135 / 1218	1271 / 1354
	inch	39,4 / 42,7	44,7 / 48	50 / 53,3
Net height / Gross height	mm	1980 / 2126	1980 / 2126	1980 / 2126
	inch	78 / 83,7	78 / 83,7	78 / 83,7
Net weight / Gross weight	Kg	284 / 295	299 / 312	329 / 329
	Lb	626 / 650	659 / 688	692 / 725
OTHERS				
Sound level	dB	64	64	64

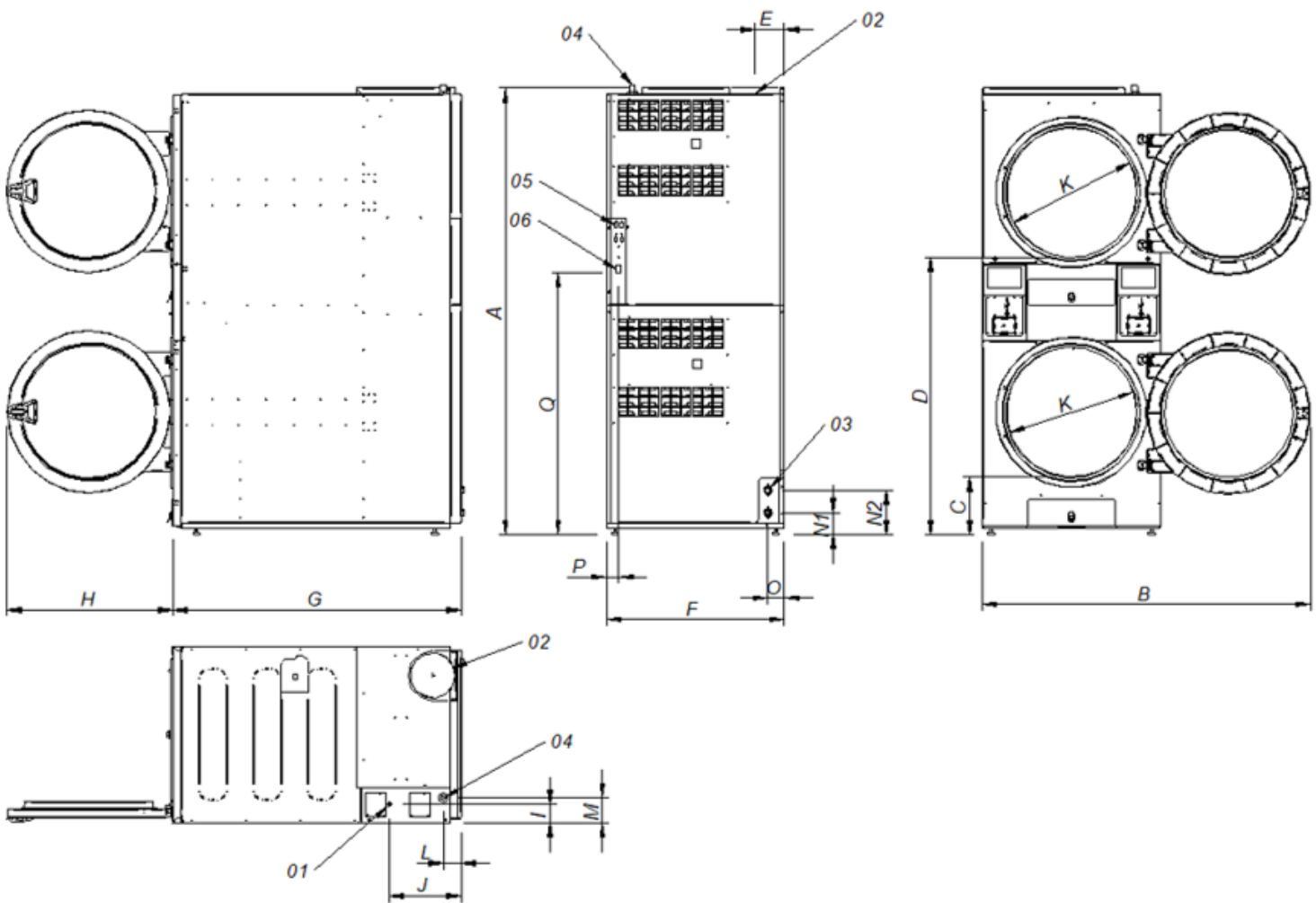
* Drying conditions: full load (1/20) of towels, drying temperature 90°C.

** Kg dry linen per hour. Drying conditions: full load (1/20) of towels, drying temperature 90°C.

*** Calculation of thermal power from PCI.

(5*) Connect 2 phases and land.

(6*) Connect phase, neutral and land.



- 01. Electrical connection
- 02. Vapour outlet Ø200
- 03. 2 fire valves 3/4".
- 04. Gas inlet 3/4".
- 05. Ethernet connection (only available on models with TP2 control)
- 06. ON/OFF control switch

	A	B	C	D	E	F	G	H	I	J	K	L	M	N1	N2	O	P	Q
SR-2-11 TP2 XP	1994	1447	259	1234	131	785	1001	735	83	318	575	77	113	97	197	73	54	1163
SR-2-14 TP2 XP	1994	1447	259	1234	131	785	1135	735	83	318	575	77	113	97	197	73	54	1163
SR-2-18 TP2 XP	1990	1447	259	1234	131	785	1271	735	83	318	575	77	113	97	197	73	54	1163



DRYING

STACK DRYERS ADVANCE SR-2-22 TP2 XP



CHARACTERISTICS

TP2

- 7" colour touch screen, programmable and easy to use.
- USB connection.
- FAGORKONNECT - Includes online platform for programming, telemetry, data analysis... via IoT.
- On-screen videos: announcements, instructions (useful for self-service).
- 37 languages

OUTSTANDING FEATURES

- FREQUENCY INVERTER - Standard inversion of rotation.
- STAINLESS DRUM - Stainless steel drum standard.
- Frequency inverter standard.

EFFICIENCY

- MIXED FLOW - Axial-radial airflow system.
- EFFICIENT AIRFLOW - Large debris filter.

VERSATILITY

- Tailor-made - Customisation.
- WET CLEANING.
- OPL > Self-Service - The standard OPL dryer convertible to self-service version.

CONNECTIVITY

- IoT FagorKonnnect standard.
- Laundry management: OPL and self-service.
- Remote payment (self-service).

ERGONOMICS

- **Stainless steel filter drawer.**
- **Large door diameters.**
- **180° opening hinges.**

MAINTENANCE

- Hinged panel: easy and ergonomic access.

- Technical menu: statistics, for technicians and maintenance.

OTHERS

- Grey skinplate cabinet, stainless steel effect.
- SOFT TOUCH - Drum with recessed perforations.
- COOL DOWN - Cooling at the end of the cycle.
- Available in electric or gas heating.
- CE approved.

OPTIONS

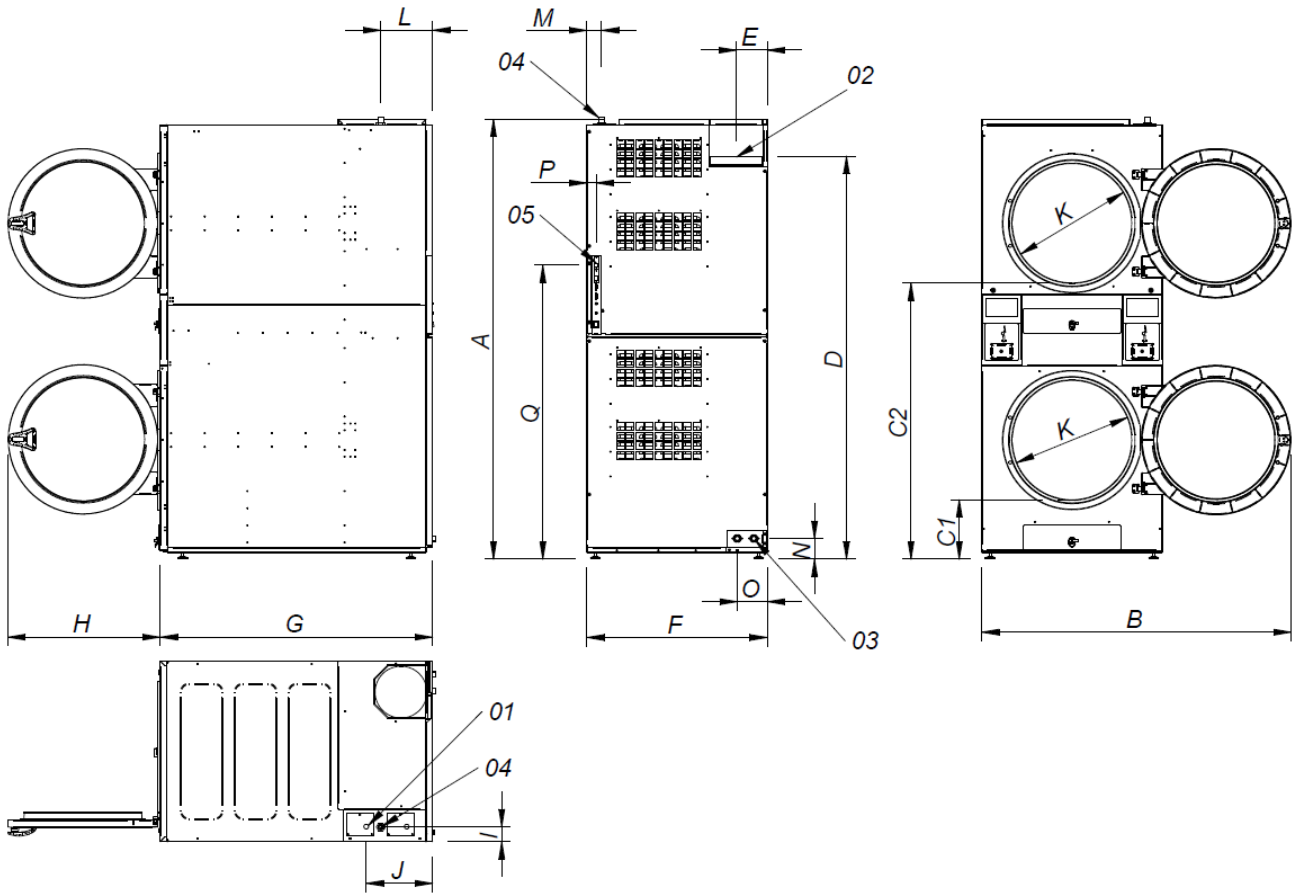
- iDRY - Intelligent humidity control. With temperature control at drum air inlet.
- Double glazed door.
- FIRE KARE - Integrated fire protection system.
- Tropicalised model.
- Opposing door opening.
- Dosing/spraying.
- Stainless steel cabinet.
- Stainless steel front panel
- Wooden packaging.
- Rear panel external air inlet + filter.
- Filter borras with 0,3 mm mesh (standard 0,6mm).
- Maritime voltage for electric models: 440V III 50/60 Hz No N.
- Other voltages available.

		U.	SR-2-22 TP2 XP
CAPACITY			
Capacity 1/18	Kg	24,3 x 2	
	Lb	53,6 x 2	
Capacity 1/20	Kg	21,9 x 2	
	Lb	48,3 x 2	
DRUM			
Ø Drum	mm	835	
	inch	32,9	
Drum length	mm	800	
	inch	31,5	
Drum volume	l	440	
	cu ft	15,54	
Ø Door	mm	575	
	inch	22,6	
Floor to door center	mm	574 / 1618	
	inch	22,6 / 63,7	
Floor to lower part of the door	mm	214 / 1258	
	inch	8,46/49,53	
Drum motor power	kW	0,37 x 2	
GAS POWER			
Installed heating power gas	kcal/h***	26139 x 2	
	Btu/h***	103798 x 2	
	kW***	30,4 x 2	
Installed electrical power	kW	1,94	
Instant propane gas consumption (G31)	Kg/h	2,61 x 2	
	Lb/h	5,75 x 2	
Instant natural gas consumption (G20)	m³/h	3,22 x 2	
	cfm	1,89 x 2	
Evaporation capacity	l/h	44 (22 x 2)	
	USgallon/h	11,62 (5,81 x 2)	
Hourly output	Kg/h	88 (44 x 2)	
	Lb/h	97 x 2	
Ø Gas inlet	BSPP ISO 228-1	3/4"	
VENTILATION			
Nominal air flow	m³/h	900 x 2	
	cfm	529,72 x 2	
Air outlet Ø	mm	250	
	inch	9,84	
Fan motor power	kW	0,55 x 2	
HEAT DISSIPATION			
Total max heat dissipation	kW	5	
	Btu/h	16934	
Front pannel max heat dissipation	kW	1,9	
	Btu/h	6350	
CONNECTIONS		GAS	
Tension 230V - I + N + G	Nº x mm2 / A	3 x 2,5 / 20	
Tension 230V - III + G	Nº x mm2 / A	3 x 2,5 / 20 (5*)	
Tension 400V - III + N + G	Nº x mm2 / A	3 x 2,5 / 20 (6*)	
DIMENSIONS / PACKING DIMENSIONS			
Net width / Gross width	mm	870 / 950	
	inch	34,3 / 37,4	
Net depth / Gross depth	mm	1312 / 1395	
	inch	51,7 / 54,9	
Net height / Gross height	mm	2118 / 2250	
	inch	83,4 / 88,6	
Net weight / Gross weight	Kg	374 / 389	
	Lb	823 / 856	
OTHERS			
Sound level	dB	69	

*** Calculation of thermal power from PCI.

(5*) Connect 2 phases and earth.

(6*) Connect phase, neutral and earth.



- 01. Electrical connection
- 02. Vapour outlet Ø250
- 03. 2 fire valves 3/4".
- 04. Gas inlet 3/4".
- 05. Ethernet connection (only available on models with TP2 control)

	A	B	C1	C2	D	E	F	G	H	I	J	K	L	M	N	O	P	Q
SR-2-22 TP2 XP	2118	1490	286	1330	1940	149	870	1312	735	73	320	575	250	70	100	145	45	1416